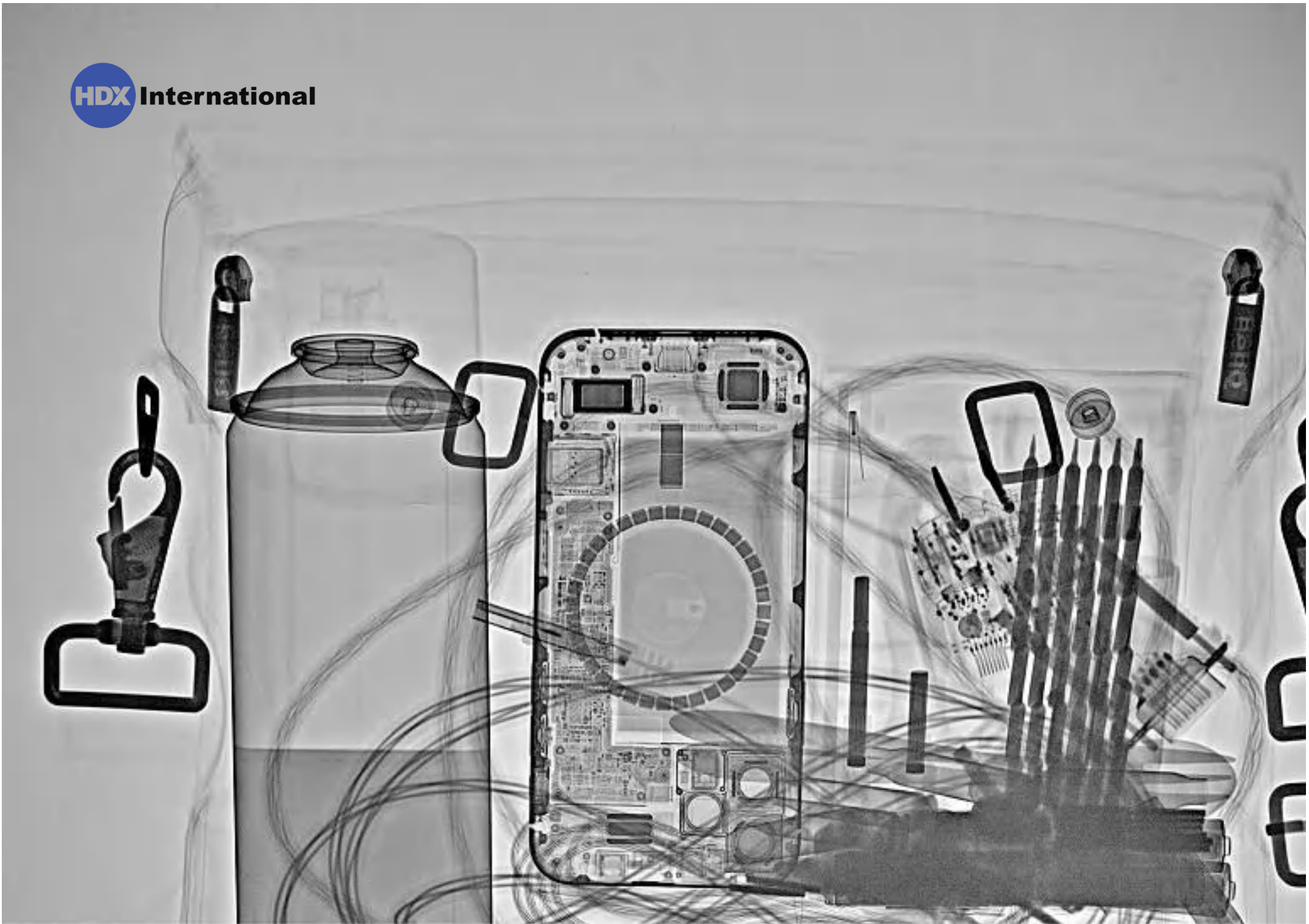




# PX3-S PORTABLE X-RAY SYSTEM

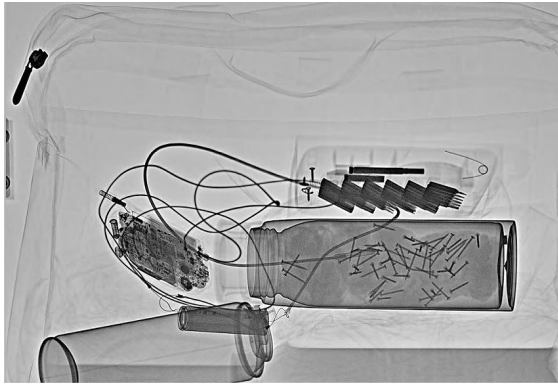
## PRODUCT OVERVIEW

[hdx.ihongde.com](http://hdx.ihongde.com) | [sales@ihongde.com](mailto:sales@ihongde.com)



# APPLICATIONS

Boarder Control



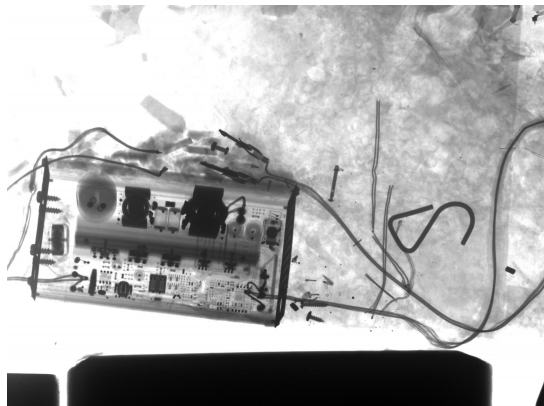
VIP Protection



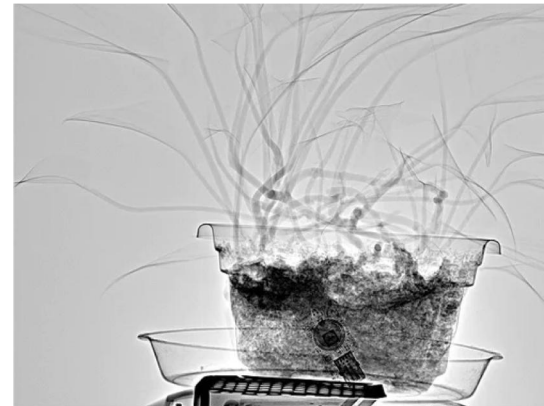
CBRN Defense



Fire&Arson Investigation



TSCM

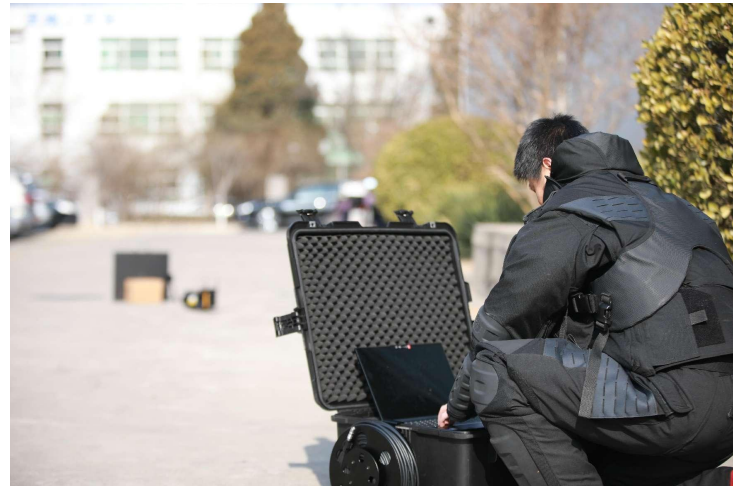


# SYSTEM

*An ideal system suitable for various public security applications.*

*Small size, light weight, easy operation, and stable performance.*

- 1717X / 1417X / 1012X imaging panel options
- Wired & wireless modes
- Rugged tablet / laptop
- Golden Engineering X-ray source options
- Integrated everything into a rugged hard case with wheels



# PX3-S SOFTWARE

- ① Touchscreen software  
User-friendly interface for intuitive operation.

---

- ② Intelligent image optimization  
One-touch optimization algorithm.

---

- ③ High-definition image review  
Distortion-free magnification to capture every detail.

---

- ④ Preset modes  
Three preset modes are available for quick access to previously saved setting.

---

- ⑤ Simultaneous comparison  
2-4 image results can be displayed simultaneously on the screen for comparison and processing

# CONTROL BOX



Wireless range: Up to 150m  
 Dual-band connection: 2.4GHz and 5.8GHz  
 Power supply: DeWalt 20V battery

# PX3-S IMAGING PANEL

*Portable flat panel detector: Lightweight, thin, and durable*



Imaging Panel Model	1717X	1417X	1012X
Panel Size	460×460×15mm	460×384×15mm	362×269×15mm
Imaging area(inch)	17×17	14×17	10×12
Weight(including battery)	3.4kg	3kg	2.3kg
Thickness	15mm	15mm	15mm
Pixel Size	100µm		
Spatial Resolution	5 lp/mm		
Wireless	Build-in WiFi Gigabit		
Protection Level	IP56	IP55	IP55
Battery Life	8hrs	5hrs	8hrs

# LAPTOP&TABLET

*\*Users are advised to select and purchase suitable laptop computer locally*



- Rugged Tablet
- Up to a 12.2" Full IPS display
- Windows 11
- 16GB + 512GB



- Rugged Laptop
- Up to a 14" Full IPS display
- Windows 11
- 16GB + 512GB

# X-RAY GENERATOR

*With superior penetrating ability, Golden Engineering pulsed X-Ray generators are smaller, lighter and safer than alternative technologies*



XRS4



XRS3



XR200

	XRS4	XRS3	XR200
KVP	370KV	270KV	150KV
Penetration	Up to 100mm steel plate	Up to 85mm steel plate	Up to 36mm steel plate
Pulse Rate	9 pulse/second	21pulse/second	10pulse/second
Weight	8.3kg with battery	5.4kg with battery	5kg with battery
Battery working time	3000 pulses per charge	5500 pulses per charge	6000 pulses per charge

# ACCESSORIES

## Communication Cables

The 50m communication cables provide reliable and fast data transmission between the different parts of the system.



## Detector Stand

The Detector Stand is a bespoke accessory that holds the Detector securely in an upright position (portrait or landscape).



## Tripod

Tripod height adjustable, 360 degree rotation, can meet a variety of scene use.



## Battery for x-ray generator





[hdx.ihongde.com](http://hdx.ihongde.com) | [sales@ihongde.com](mailto:sales@ihongde.com)