

(TRACELINE)

PX3 PORTABLE X-RAY SYSTEM





High Portability

- Battery-powered for easy transport
- Quick setup and deployment
- Ideal for narrow or confined spaces



Rapid Imaging

- Fast X-ray image acquisition for immediate results



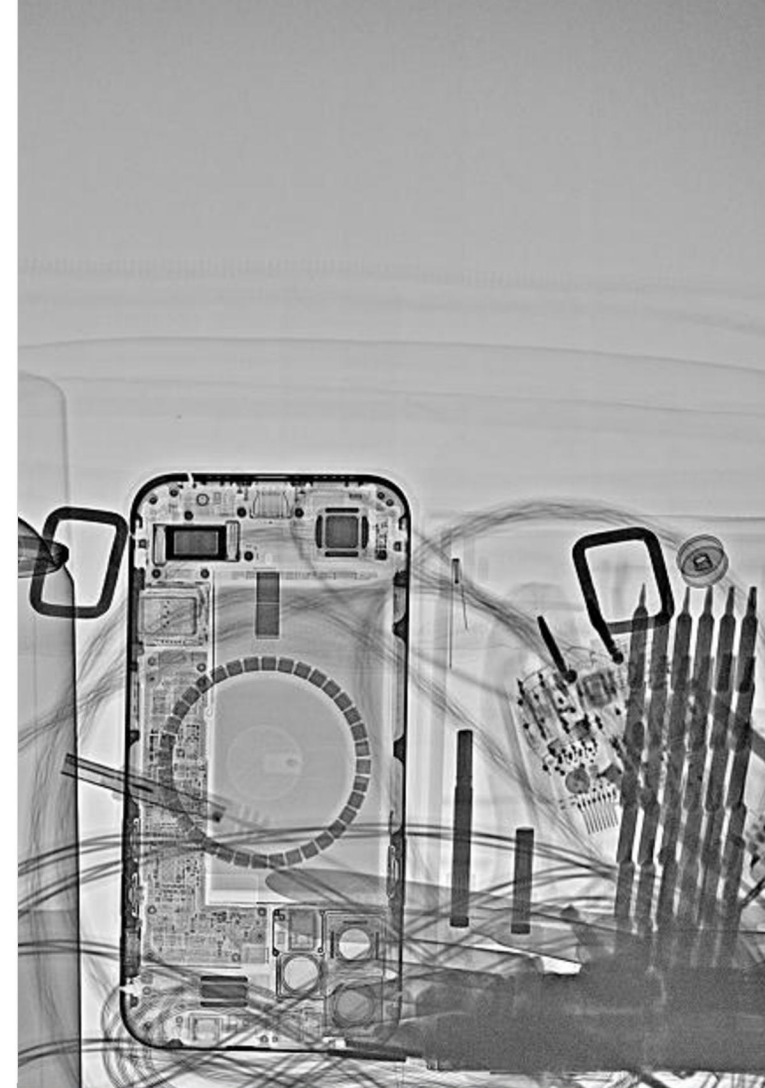
Dual Control Modes

- Supports both wireless and wired operation

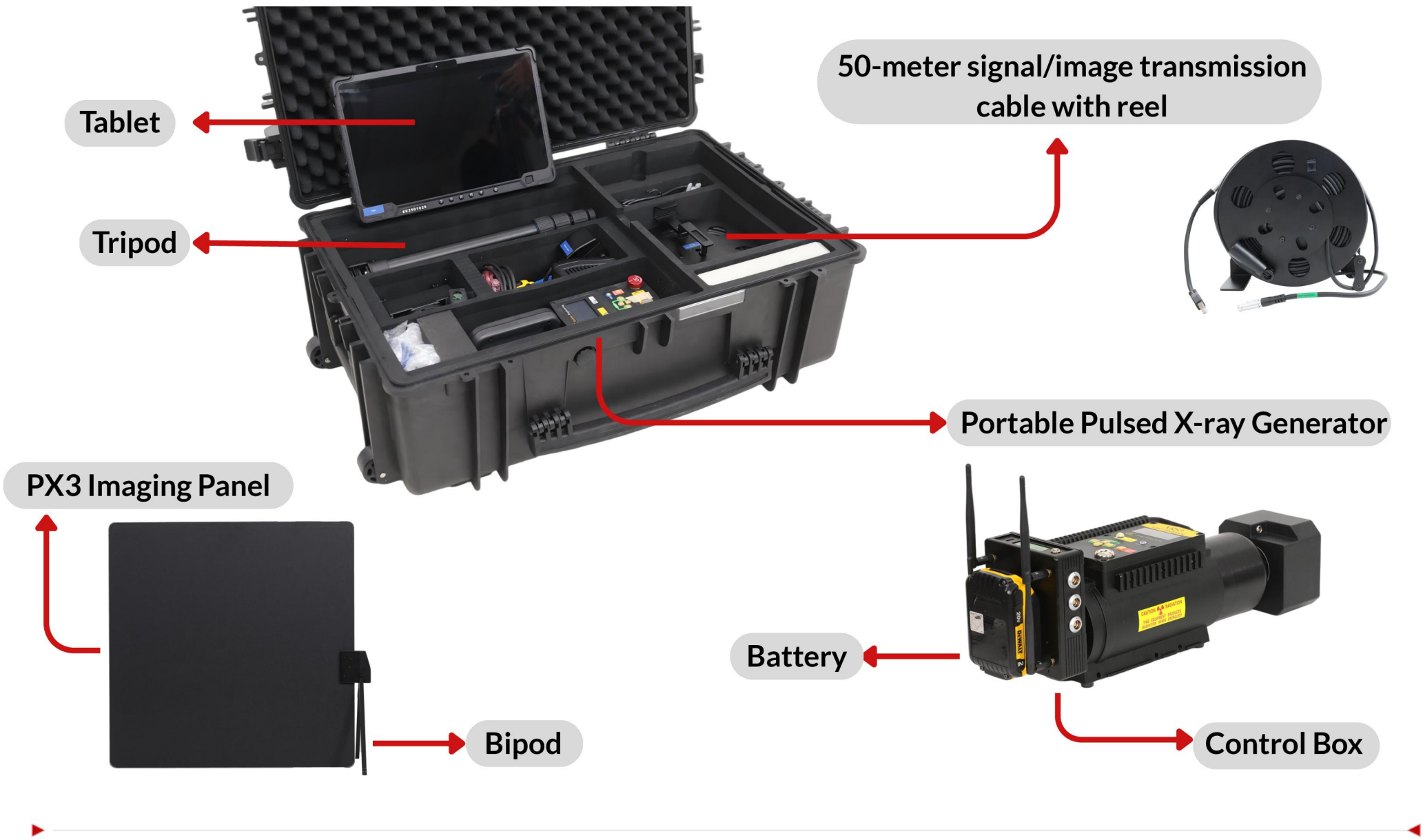


Radiation Safety

- Pulsed X-ray source with no radioactive materials
- No radiation leakage
- Lead shielding for enhanced protection



Main Components



Portable Pulsed X-ray Generator

From Golden Engineering



PHISICAL DIMENSIONS INCLUDING BATTERY PACK				
Model	XR150 20V	XR200	XRS3	XRS4
Length	10.49 in (26.65 cm)	12.17 in (30.91 cm)	15.42 in (39.17 cm)	19.26 in (48.92 cm)
Width	3.54 in (8.99 cm)	4.26 in (10.82 cm)	4.26 in (10.82 cm)	4.80 in (12.19 cm)
Height	4.71 in (11.96 cm)	5.83 in (14.81 cm)	5.83 in (14.81 cm)	7.05 in (17.91 cm)
Weight	5.7 lb (2.58 kg)	11.00 lb (5.00 kg)	11.80 lb (5.40 kg)	18.30 lb (8.30 kg)
X-RAY OUTPUT				
X-ray dose per pulse	2.0 to 2.8 mR	2 mR to 3.4 mR	2 mR to 4.3 mR	4 mR to 8.5 mR
Pulses per battery charge	9000 +	6000	4000	3000
Expected tube life (glass tube)	30,000 pulses	100,000 pulses	100,000 pulses	50,000 pulses
Maximum Photon Energy	150 kVp	150 kVp	270 kVp	370 kVp
Output Power	75 W	75 W	67.5 W	92.5 W
ELECTRICAL AND THERMAL CHARACTERISTICS				
Operating Temperature	0° to 120° F(-18 to 50° C)	0° to 120° F(-18 to 50° C)	0° to 120° F(-18 to 50° C)	0° to 120° F(-18 to 50° C)
IP Rating	IP 54	IP 54	IP 54	IP 54
Minimum Standby Time	10 hours	10 hours	10 hours	10 hours



PX3 Image Processing Software

- **Touch-Based Pulse and Parameter Control**

Easily adjust pulse count, delay time, and image parameters through an intuitive touchscreen interface.

- **One-Click Wired/Wireless Mode Switching**

Seamlessly switch between wired and wireless operation with a single tap for greater flexibility in the field.

- **Instant Image Acquisition**

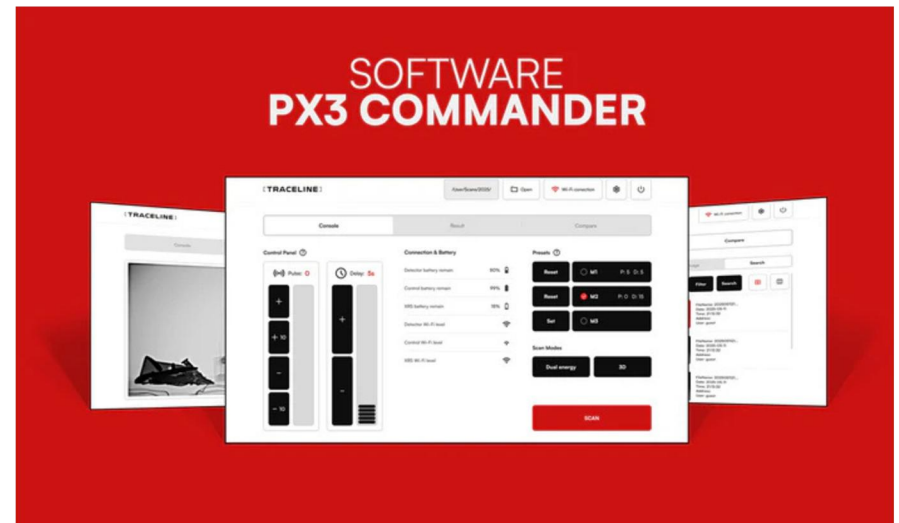
Capture X-ray images quickly with one-click image acquisition, improving operational efficiency.

- **Advanced Image Processing Tools**

Includes rotation, flipping, zoom, brightness/contrast adjustment, pseudo-color, emboss, local enhancement, and measurement tools for detailed image analysis and customization.

- **3D and Dual-Energy Modes**

Fast toggling between modes to adapt to different imaging needs.



Control System



Control Box

- Enables wired/wireless image transmission between console and receiver panel
- Wireless transmission supports dual-band Wi-Fi (2.4G / 5.8G), with a maximum line-of-sight range of 200 meters

High-performance touchscreen laptop

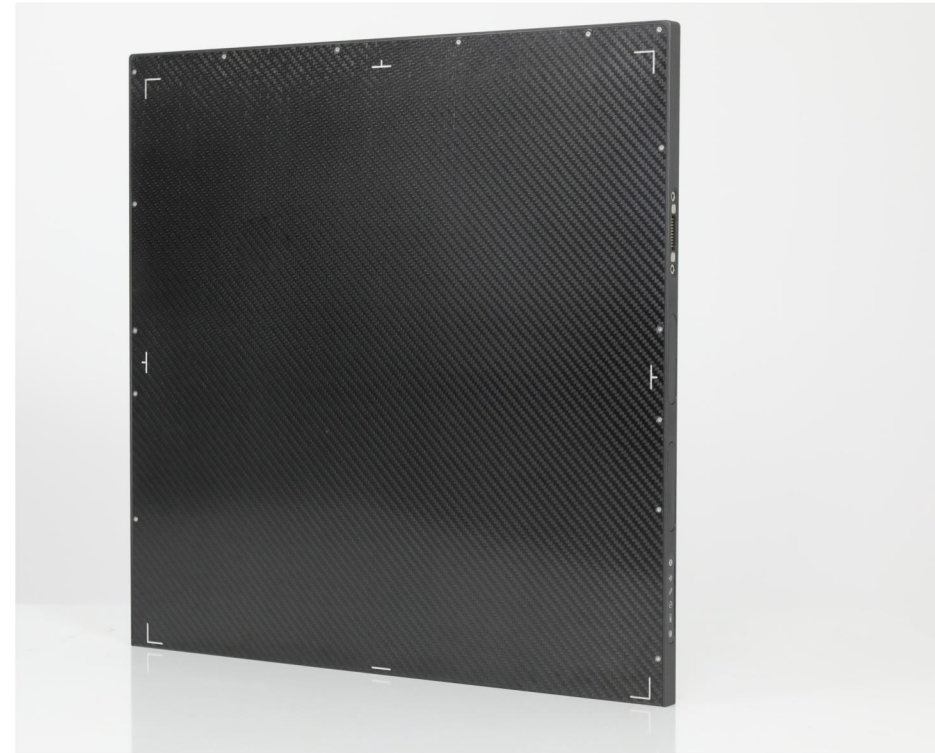
- Pre-installed with Windows 11 operating system
- Equipped with a 14-inch touchscreen
- Full battery supports up to 4 hours of continuous operation



X-ray Imaging Panel

Amorphous Silicon imaging panel, 14inch and 17inch size meeting most detection needs, can obtain clear images of the entire subject without strict alignment with the imaging area.

139 micron pixels can obtain clear and layered images with fewer pulses.

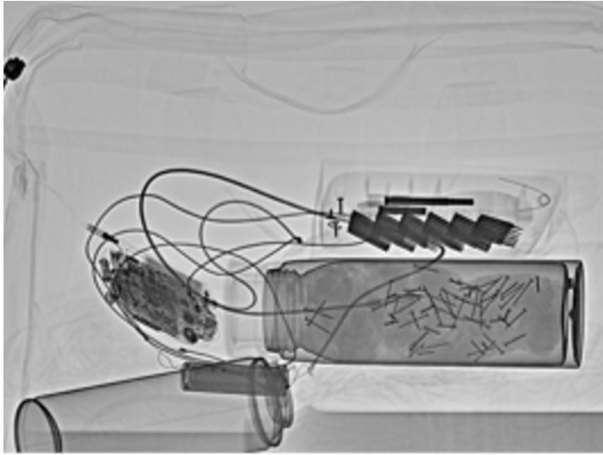


Imaging Panel Specifications

NAME	PP3543	PP4343	PP3543H	PP4343H	PP3543HN	PP4343HN
Type of the detector	Amorphous Silicon					
Type of the Crystal	CSi					
Effective imaging area (mm)	350 x 430	430 x 430	350 x 430	430 x 430	350 x 430	430 x 430
Panel Dimensions (mm)	388 x 460 x 15	460×460×15	384×460×15	460×460×15	389 x 459 x 15	460×456×15
Pixel size	139 μm		100 μm		100 μm	
Spatial resolution	3.5 LP/mm		5 LP/mm		5 LP/mm	
AD converter bits	16 bits					
Battery life	6.5 h	6h	5.5 h	4.5h	6.5h	4.5h
Protection grade	IP54					
Wireless transmission	5.8G					
Blind area	Bottom=9mm	15mm	17mm/16.5mm	15mm	Bottom = 5mm; Left = 11.5mm	Bottom = 5mm; Left ≤ 11mm
Weight(including battery)	4kg	4.5kg	4kg	4.5kg	4kg	4.5kg

Common Applications

Security Check



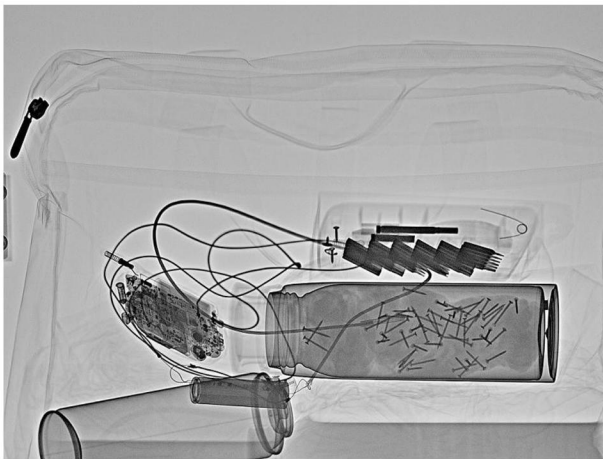
CBRN Defense



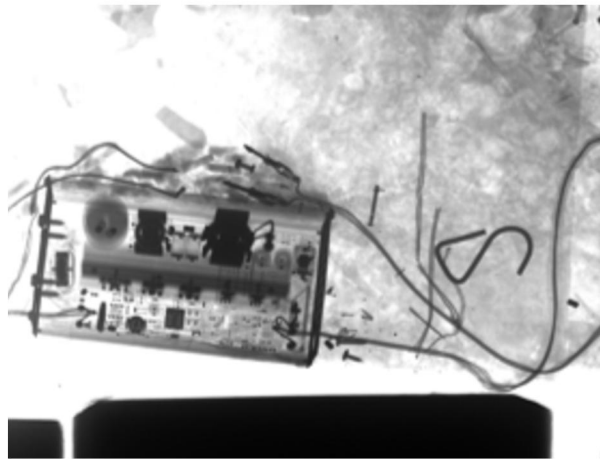
Boarder Control



EOD



Fire & Arson Investigation



TSCM





hdxinternational.com

sales@hdxinternational.com