

TRACELINE



- High-resolution, real-time imaging
- Compact structure, capable of single-sided imaging and imaging in narrow spaces
- Automatic image optimization for better visualization and identification of potential security threats
- Capable of detecting firearms, explosive devices, dictagraphs, illegal drugs, and other contrabands hidden on metal and non-metal surfaces
- Optional integration with our company's wireless flat panel detector, achieving more efficient simultaneous backscatter and transmission imaging to meet various inspection requirements

PB140 Portable Backscatter Scanner

| Boarders |
| Airports |
| Prisons |
| Customs |
| Goverment facilities |
| Metros |



Technical Specifications

General Specification

Scan Speed (mm/s)	150 ~ 300mm/s
Scan Time (max) (s)	30
Generator Voltage (kV)	140
Detection Capability	Explosive & IEDS, narcotics, liquids and other light or organic materials

Imaging Processing System

Image Acquisition Mode	Real Time
Imaging Processing	Image Mosaic, photographed, contrast, brightness, enhancement, pseudo color, etc

Penetration

Steel Equivalent Penetration (steel) (mm)	7
---	---

Power Supply

Operating Time (h)	6 (depending on operational characteristics)
--------------------	--

System Capacity

Storage Capacity	(64GB) >10000 scans
------------------	---------------------

Environment Specification

Operating Temperature (°C)	-20 ~ 60
Storage Temperature (°C)	-25 ~ 70
Operating Humidity (%)	5 ~ 90

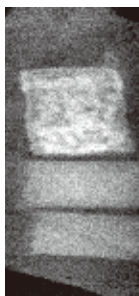
Scanner Dimensions

System Weight (kg)	3.9
System Size (mm)	293×228×190

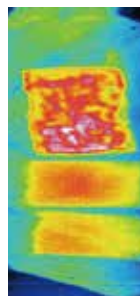
Scan Images



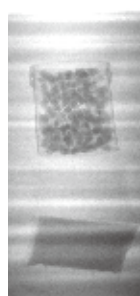
drugs with different shape and size



backscattered image of drugs



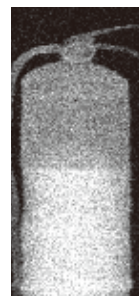
pseudo color image of drugs



transmission image of drugs



drugs inside tire



fire extinguisher



drugs inside mouse



drugs under engine-hood

Dimensions

Unit: mm

